

Homesearle House

Homesearle House Goring Road

Goring-By-Sea, Worthing, BN12 4PW

Asking price £60,000

Leasehold Council Tax Band

Homesearle House Goring

Goring-By-Sea, Worthing, BN12
ADW

James & James Estate Agents are delighted to offer to the market this retirement flat, situated in a fantastic position on the Goring Road next to shops, bus routes and other amenities.

In brief the property comprises lounge, double bedroom, kitchen, shower room, residents off road parking on a first come first served basis and security Entryphone system. Viewing is advised.

Residents Lift, Lounge, Laundry, Guest facilities, Garden, & kitchen

Whole site accessible by wheelchair. Access to site fairly easy. Distances: bus stop 25 yards; shop 40 yards; post office 40 yards; town centre 3 mile(s); GP 0.5 mile(s); social centre 3 mile(s).

Communal Entrance

Wardens Office

Residents Lounge

Laundrette

Passenger lift to second floor

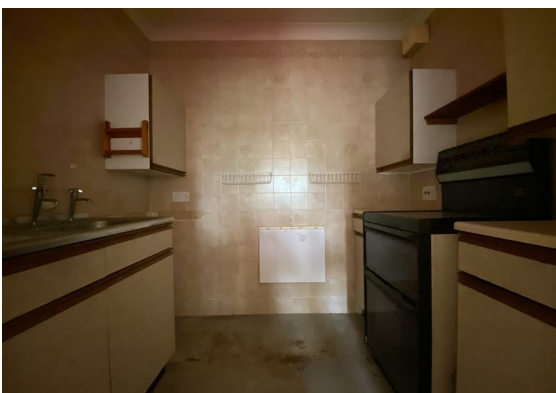
Entrance Hall

Lounge
17'5 x 10'6 (5.31m x 3.20m)

Kitchen
7'4 x 5'5 (2.24m x 1.65m)

Bedroom
14' x 8'9 (4.27m x 2.67m)

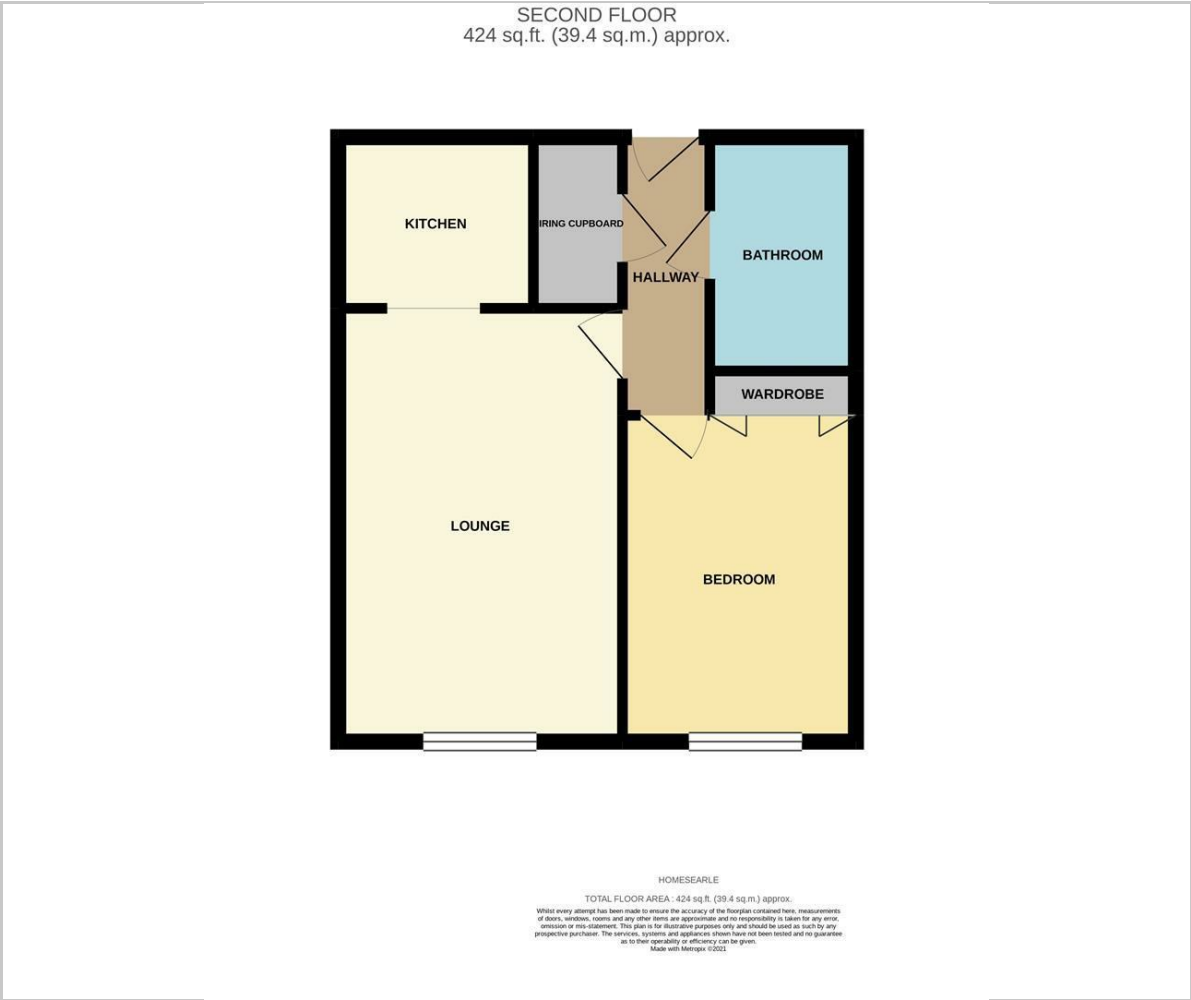
Bathroom





Residents Parking
Communal Gardens

Floor Plan



Viewing

Please contact our James & James Estate Agents Office on 01903 958770 if you wish to arrange a viewing appointment for this property or require further information.

These particulars, whilst believed to be accurate are set out as a general outline only for guidance and do not constitute any part of an offer or contract. Intending purchasers should not rely on them as statements of representation of fact, but must satisfy themselves by inspection or otherwise as to their accuracy. No person in this firms employment has the authority to make or give any representation or warranty in respect of the property.

Area Map



Energy Efficiency Graph

